



## OIL-WET INCLINING PLATFORM SLIP RESISTANCE TEST

### Fiddes Hardwax Oil applied to timber

**Prepared for:** Fiddes Australia  
Melissa Wyness  
10/100 New Street  
RINGWOOD VIC 3134

**Specimen Description:** Fiddes Hardwax Oil applied to timber, 550x900 mm.

**No. of Specimens:** 1 off

**Surface Structure:** Structured

**Specimen Preparation:** Washed with water and pH neutral detergent, rinsed then dried.

**Specimen Configuration:** Unfixed

**Test Direction:** Test conducted parallel with grain of timber.

**Joint Type & Width:** N/A

**Air Temperature:** 21°C

**Test Standard:** AS 4586:2013 Slip resistance classification of new pedestrian surface materials, Appendix D - Oil Wet Inclining Platform Test

**Test Shoe:** Leipzig V73-SP

**Test Location:** ATTAR, Unit 1, 64 Bridge Road, Keysborough.

**Test Date:** 15 May 2019

**Test Personnel:** Awel Guled and Dale Siegle

<b>Displacement Space</b> (rounded to the nearest 0.5cm <sup>3</sup> /dm <sup>2</sup> ):	Not tested
<b>Displacement Space Assessment Group</b> (Appendix E, AS 4586 - 2013):	Not tested
<b>Corrected mean overall acceptance angle (<math>\alpha_{ave}</math>)</b> (rounded down to the nearest degree):	26°
<b>Classification:</b>	R11

These results apply only to the specimens tested and it is recommended that before selection of flooring or paving materials the effect of service conditions, including maintenance procedures and wear on their slip resistance be checked.

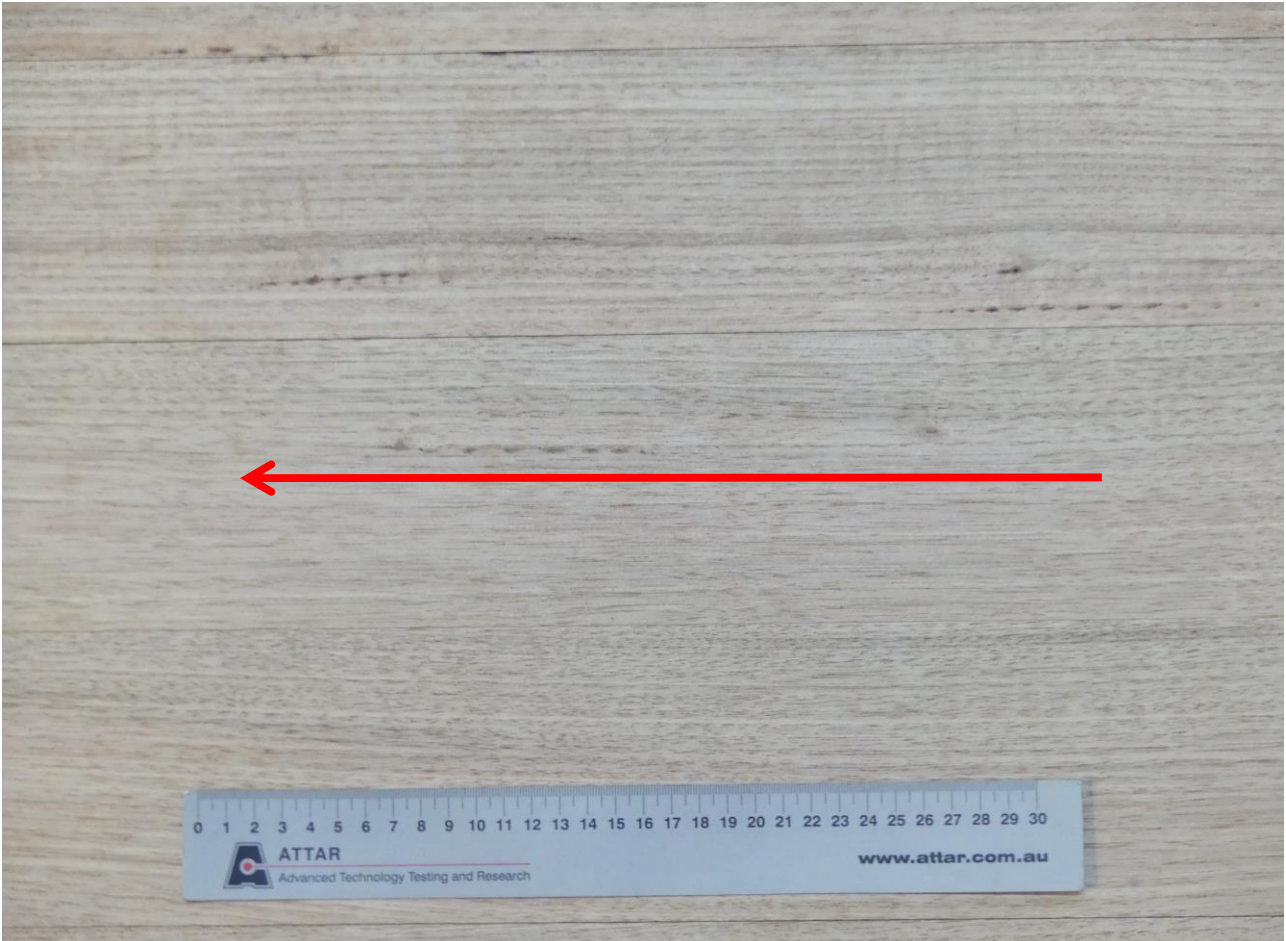
Reviewed By:



Dale Siegle  
Compliance and Test Technician  
Approved Signatory



Awel Guled  
Compliance and Test Technician  
Approved Signatory



**Figure 1:** Fiddes Hardwax Oil applied to timber  
Arrow indicates direction of testing

**CLASSIFICATION CRITERIA – AS 4586 - 2013**  
**Oil Wet Inclining Platform Test – Appendix D**

**Compliance**

**TABLE 5: CLASSIFICATION OF PEDESTRIAN SURFACE MATERIALS ACCORDING TO THE OIL-WET INCLINING PLATFORM TEST**

<b>Classification</b>	<b>Angle, degrees</b>
No Classification	<6
R9	≥6 <10
R10	≥10 <19
R11	≥19 <27
R12	≥27 <35
R13	≥35